



# "ROSE HIPS"

Affiliated with the American Rose Society

June 2008

## Mark your calendar

**July 7, 7:00 PM**

**IdRS July Meeting:** Location: Sandra Ford's house, 6575 Plantation Lane, Boise. (*see Driving directions, this page*)

**Thursdays, 8:00 AM—11:00 AM**

**Deadheading at the garden:** Bring your pruners and lend a hand at the Rose Garden at Julia Davis Park.

**August 4, 7:00 PM**

**IdRS August Meeting:** Location: Luis & Anita Gonzalez's house, 2499 E Franklin Rd, Meridian.

**August 7—9**

**IGC Flower Show School, Course 1:** Learn about growing exhibition-quality horticulture specimens and creating traditional floral designs. Learn about exhibiting and judging at flower shows. Don't miss out on this unique opportunity. (*see Flower Show School, page 2*)

**September 8**

**IdRS September Meeting:** Location: Ross & Darlene Hoffland's house, 6520 W Ustick Rd, Boise.

## Join the Deadhead Crew!

Deadhead (*noun*) - A fan and follower of the Grateful Dead band.  
To deadhead (*verb*) - To remove spent or dead blossoms from a plant.

Along with summer, both recently appeared in local parks. The first may have moved on to Utah after the concert at IBG, but the second is ongoing in Julia Davis Park. Yes, that's right! Deadheading is in full swing at the Rose Garden at Julia Davis Park.

You, too, can join in the fun. Simply show up at the rose garden any Thursday morning between 8:00 AM and 11:00 AM. Bring your pruning shears and gloves — and a bucket if you have one handy. A touch of sunscreen and a bottle of water is also a good idea this time of year.

If you are available on a Thursday morning, please consider helping out. The size of the crew has dwindled recently, so every pair of helping hands will make a big difference. Hope to see you in the garden.



**2008 Rose Show Royal Court** — Queen (center): 'World War II Memorial', Anita Gonzalez; King (left): 'Heirloom', Sandra Ford; Princess (right): 'Medallion', Darlene Hoffland.

## Driving directions to July 7 meeting

From State Street (west of Collister), turn south onto N Plantation River Drive. Plantation Lane is the first right. Take Plantation Lane almost to the end—Sandy's house is on the left, at 6575 Plantation Lane.

### Inside this issue

|                                  |          |
|----------------------------------|----------|
| Meeting Minutes:<br>June 2, 2008 | <b>2</b> |
| Flower Show School               | <b>2</b> |
| Nutrient Uptake—Part 1           | <b>3</b> |
| Rose Show Results                | <b>4</b> |
| "E-Mail Only" Graph              | <b>6</b> |

# Meeting Minutes

## June 2, 2008

The meeting was called to order by President Warren Skelton at 7:03 p.m. at the home of Amy Dohmen.

**Members in attendance:** Anita Gonzalez, Allen Deitz, Amy Dohmen, Ross and Darlene Hoffland, Angie Barbosa and Alex Hyde, Warren Skelton, Jean Marion, Jenefor Cushing, Virginia Pierce, Karen Mallon, Maggie Storm, Marilyn Smith, Gayle Bush, Diane Talsma, and John Hubert.

- Anita moved to approve the minutes of the May meeting as presented in the newsletter. Amy made the second. Motion passed.
- Darlene gave the Treasurer's report: Ending balance of \$2,872.20. She submitted a bill for \$39.08 for reimbursement for newsletter production and delivery.
- Darlene reports that the total income from the mini rose sale was \$2,877.50, the profit was \$1,076.36 and that we sold 446 roses. Not as many members bought roses this year as have in the past, but we did generate some new members from the event. We discussed ordering half the quantity for next year's sale. Also, suggestion was made and discussed to order a month earlier to get a better selection and give them time to bloom before the sale.
- Warren has received a list of roses from Earthkind Roses that are deemed exceptionally hearty for our area, zone 6. He passed it along to Allen for inclusion in the June newsletter.
- The Idaho Statesman article featuring the interview with Amy Dohmen did run, although later than expected, with no mention of the Rose Show as promised.
- New member, John Hubert, is a neighbor of Amy's. He accidentally backed a trailer into a floribunda by his mailbox. He called the Ada County Extension office for advice and they referred him to Warren. Warren came over and helped John dig up and move the bush in three different sections into his backyard where they are all thriving. Thanks, Warren!

- There was discussion on changing the Rose Society meetings back to the second Monday of each month, but most preferred to continue meeting on the first Monday of each month. No change was made.
- Anita gave an update on the Rose Show, and passed around a sign up sheet for volunteers at the show. She gave all section chairs their show materials. Gayle Bush offered to write the 'Thank You' cards for our judges. Luis is making wooden stands for the winners. Anita announced that the exhibitor numbers list is going to be revised after this year's show, as too many numbers are old assignments for people who are no longer members or who no longer exhibit in the show. She also called for us to stay to help put chairs and tables away when we come to pick up our roses. Anita will bring extra tablecloths, and print up about 50 information sheets for the viewing public to use. Amy passed tags and entry forms for exhibitors, and rose bowls were available for sign out. Lunch tickets were also available.
- Meeting was informally adjourned at 7:40 p.m. and Amy and Allen gave our presentation on Rose Show entry preparation and arrangement basics.



*Angie Barbosa, Secretary*

---

## Flower Show School

Idaho Garden Clubs, Inc. (IGC) is presenting the first in a series of four 2-day courses for flower show exhibitors and judges. Course I focuses on American Traditional designs (line, line-mass, mass, and still life) and horticulture topics of annuals and houseplants. While the courses are about standard flower shows — not rose shows — the information is very relevant to rose show exhibitors.

The courses will be presented in Boise. Course I is scheduled for August 7 & 8, from 9:00 AM to 4:30 PM. Register before July 7 to avoid late registration fees.

Complete information is available on the IGC Web site at <http://www.idahogardenclubs.org>, or contact Allen Deitz (867-3345) to request a brochure and registration form by mail.

# Nutrient Uptake — Part 1

by Dr. Gary A. Ritchie  
8026 61st Ave. NE  
Olympia, WA 98516

E-mail: [rosedoctor@comcast.net](mailto:rosedoctor@comcast.net)

Following an interminable winter, spring finally arrives. The soil warms up to about 55°F and you carefully apply a handful of balanced garden fertilizer around the base of each of your rosebushes. You scratch it into the soil with a rake, apply water, and retreat to your warm kitchen for a cup of coffee.

Then what happens? How do the nitrogen, potassium, phosphorus and other nutrient elements in the fertilizer get inside your plant to perform all their required functions? The answer(s) to this question get complicated, so much so that it will require three columns to address them properly. And even then, we'll be looking at only the tip of an iceberg — the subject of plant nutrient uptake fills books.

In this first of three installments we will discuss some of the anatomical features of your rosebush that are involved in nutrient uptake. In the second, we'll review some of the basic chemistry that must happen before nutrient uptake can occur. And in the final column we'll talk about the three main mechanisms of plant nutrient uptake and how they work.

Let's start with some basic plant anatomy. As you know from our previous column, anatomy deals with structure (as opposed to physiology, which deals with function). The main structures involved in nutrient uptake are the roots, the xylem, and the stomata. Let's begin with roots. The illustration of a young root shows the various types of cells that can be found in the root when it is examined in microscopic cross section. At the root surface are epidermal cells, and many of these are modified into what are called "root hairs." These have a large surface area and are major players in water and nutrient uptake. Inside the epidermis are the thin-walled cells of the cortex and endodermis. Contained within the endodermis is a structure known as the "Casparian strip," whose function is still under investigation. Inside this strip lies the pericycle, which encloses the vascular tissues — the xylem and phloem. These are pipes through which water and sugars move around inside the plant. The darkened cells and arrows in the drawing show the pathway of water as it makes its way from the soil into the xylem.

The xylem elements are continuous from the roots to the leaves. You can visualize them as bundles of pipes running up the plant stem. The individual xylem pipes are connected to one another at their sides and ends. Water

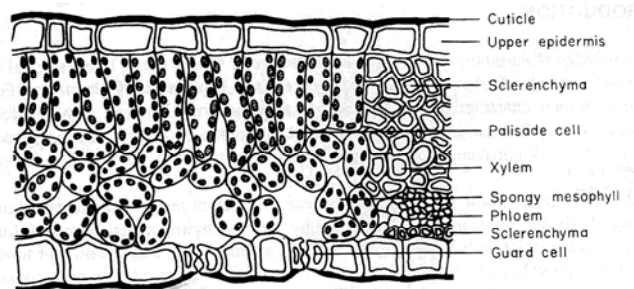


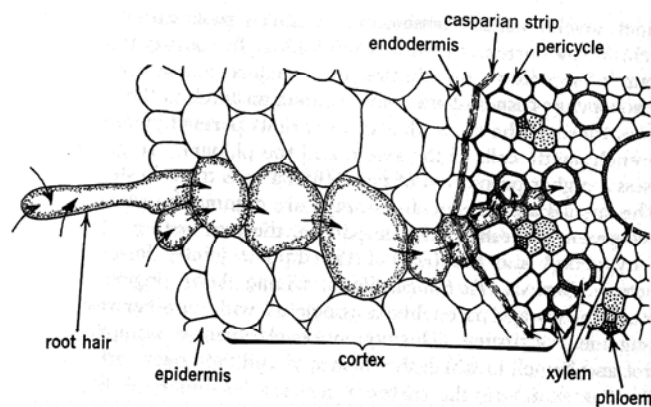
Illustration of a young root. Scanned from *Plant Anatomy* by Katherine Esau

moves from pipe to pipe through tiny pores called pits that line the sides and ends of the pipes. These bundles make their way up into the leaf where they lie adjacent to other types of leaf cells.

The second illustration represents a cross section of a leaf. You can see that the xylem bundles are adjacent to thin-walled cells called spongy mesophyll. These are loosely arranged within the leaf leaving large air gaps between them. Air can escape from the leaves through openings called stomata that are bound by what are known as guard cells. In the illustration, these are shown on the underside of the leaf. The August/September 2007 issue of *American Rose* included an article about stomata – you may want to review it.

Stomata are nothing short of miraculous. They open and close as the guard cells gain or lose turgidity from absorbing or losing water. Gasses, such as carbon dioxide, oxygen and water vapor, that enter and leave the leaf do so mainly through the stomata. Stomata are very sensitive to environmental conditions such as light, temperature and relative humidity of the atmosphere. In general, light, low CO<sub>2</sub>, high humidity, and high leaf water content cause them to open. Through control of the stomata, the plant can regulate the rate and direction in which these gasses are exchanged with the atmosphere, as well as the rate of water loss from the leaf. As we will see in the next column, the rate of water loss, or transpiration, has a direct bearing on the rate of nutrient uptake.

Illustration of cross section of a leaf. Scanned from *Physiology of Woody Plants* by Kramer and Kozlowski.



# Rose Show Results

The numbers are in! Twelve members and five non-members entered a total of 318 entries.

Congratulations to Anita Gonzalez, winner of the *Norma Stout Award* - a lovely crystal vase - for her Queen of Show, 'World War II Memorial'.

Results are shown in the following table. Classes not awarded a "best of class" award either had fewer than five entries or the judges deemed the award not merited.

Thanks to all members for their participation - not only with exhibits, but helping with set up, take down, and everything in between.

Thanks to Darlene Hoffland and crew for serving 79 delicious lunches and morning refreshments.

Thanks to the Cloverdale Church of God for the use of their facilities.

And a great big rosy THANK YOU to Anita Gonzalez for her outstanding work as this year's show chairman!

| Class   | "Best of Class" Winning Exhibit  | Exhibitor  | Total in Class |
|---|--|--|----------------|
| <b>Division I - HORTICULTURE</b>                    |  |  |                |
| <b>1 - Hybrid Tea, bloom</b>                        | <i>Queen:</i> World War II Memorial<br><i>King:</i> Heirloom<br><i>Princess:</i> Medallion | Anita Gonzalez<br>Sandra Ford<br>Darlene Hoffland  | 44             |
| <b>2 - Hybrid Tea, spray</b>                        |  |  | 1              |
| <b>3 - Grandiflora, bloom</b>                       | Love   | Anita Gonzalez                                     | 8              |
| <b>4 - Grandiflora, spray</b>                       |  |  | 1              |
| <b>7 - Floribunda, bloom</b>                        | Betty Boop   | Darlene Hoffland                                   | 18             |
| <b>8 - Floribunda, spray</b>                        | Marmalade Skies  | Darlene Hoffland                                   | 5              |
| <b>9 - Polyantha, bloom</b>                         |  |  | 1              |
| <b>10 - Polyantha, spray</b>                        |  |  | 2              |
| <b>11 - Climber, bloom or spray</b>                 | Fourth of July   | Anita Gonzalez                                     | 17             |
| <b>13 - OGR (after 1866), bloom or spray</b>        |  |  | 1              |
| <b>14 - Classic Shrub, bloom or spray</b>           |  |  | 2              |
| <b>15A - Modern Shrub, bloom or spray</b>           | Flutterbye   | Sandra Ford  | 9              |
| <b>15B - Austin's English Roses</b>                 |  |  | 2              |
| <b>16 - Novice Member</b>                           |  |  | 1              |
| <b>17 - Non-member</b>                              | Scarlet Knight   | Diana Bernardelli                                  | 6              |
| <b>18 - Miniature, bloom</b>                        | <i>Queen:</i> Child's Play<br><i>King:</i> Luis Desamero<br><i>Princess:</i> Kayla         | Warren Skelton<br>Warren Skelton<br>Warren Skelton | 61             |
| <b>19 - Miniature, single or semi-double, bloom</b> |  |  | 1              |
| <b>20 - Miniature, spray</b>                        | Watercolor   | Warren Skelton                                     | 27             |
| <b>21 - Miniature, bloom, fully open</b>            |  |  | 3              |
| <b>18A - Mini-Flora, bloom</b>                      |  |  | 1              |
| <b>21A - Mini-Flora, bloom, fully open</b>          |  |  | 2              |

| <b>Class</b>   | <b>“Best of Class” Winning Exhibit</b> | <b>Exhibitor</b> | <b>Total in Class</b> |
|--|--|------------------|-----------------------|
| <b>Division II - CHALLENGE CLASSES</b>               |  |                  |                       |
| <b>22 - Hybrid Tea Collection</b>                    |  |                  | 5                     |
| <b>23 - High-Low Grouping</b>                        | Grand Masterpiece / Miss Flippens      | Warren Skelton   | 5                     |
| <b>24 - Rose in a Bowl</b>                           | Bill Warriner                          | Marilyn Smith    | 9                     |
| <b>25 - Dinner Napkin</b>                            |  |                  | 7                     |
| <b>26 - English Box</b>                              |  |                  | 1                     |
| <b>27 - Miniature Collection</b>                     |  |                  | 3                     |
| <b>29 - Miniature Rose in a Bowl</b>                 | Rainbow Bliss                          | Marilyn Smith    | 9                     |
| <b>30 - Miniature Dinner Napkin</b>                  |  |                  | 5                     |
| <b>31 - Miniature English Box</b>                    | Starina / Hot Tamale / Jeslyn          | Marilyn Smith    | 5                     |
| <b>Division III - DESIGN CLASSES</b>                 |  |                  |                       |
| <b>32 - Line Design</b>                              |  |                  | 3                     |
| <b>33 - Line-Mass Design</b>                         |  |                  | 4                     |
| <b>34 - Mass Design</b>                              |  |                  | 2                     |
| <b>35 - Theme Design</b>                             |  |                  | 3                     |
| <b>36 - Solitary Bloom, Oriental style</b>           |  |                  | 5                     |
| <b>37 - Modern Design</b>                            |  |                  | 2                     |
| <b>38 - Miniature Line Design</b>                    |  |                  | 2                     |
| <b>39 - Miniature Line-Mass Design</b>               |  |                  | 3                     |
| <b>40 - Miniature Mass Design</b>                    |  |                  | 3                     |
| <b>41 - Miniature Theme Design</b>                   |  |                  | 4                     |
| <b>42 - Miniature Solitary Bloom, Oriental style</b> |  |                  | 4                     |
| <b>43 - Miniature Modern Design</b>                  |  |                  | 3                     |
| <b>Division IV - JUDGES CLASSES</b>                  |  |                  |                       |
| <b>44 - Judges Horticulture (classes 1-15B)</b>      |  |                  | 1                     |
| <b>45 - Judges Horticulture (classes 18-21A)</b>     |  |                  | 2                     |
| <b>46 - Judges Design (classes 32-37)</b>            | “Ode to Joy” (class 32)                | Bessie Skinner   | 3                     |
| <b>47 - Judges Miniature Design (classes 38-43)</b>  |  |                  | 3                     |
| <b>49 - Judges Challenge</b>                         |  |                  | 1                     |
| <b>Division V - PEOPLE’S CHOICE</b>                  |  |                  |                       |
| <b>48 - People’s Choice - Most Fragrant</b>          |  |                  | 8                     |

**Editor, Idaho Rose Society**

PO Box 190586  
Boise, ID 83719-0586



Affiliated with the American Rose Society

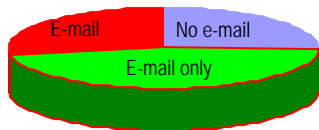


**E-Mail Only Newsletter Distribution**

Twenty-five members are now receiving “e-mail only” newsletter delivery. This is an annual cost savings of approximately \$250.

Almost 75% of our members have e-mail. If you do, you can help “grow the green” (or light grey) by adding your name to the list and shrinking the red.

Contact the editor to add your name to the “e-mail only” list.



**Contact Us**

|                  |                         |  |
|------------------|-------------------------|--|
| <b>President</b> | <b>Warren Skelton</b>   | <b>459-4700</b><br><b>Wkskelton@clearwire.net</b>      |
| <b>Vice Pres</b> | <b>Jean Marion</b>      | <b>887-3459</b><br><b>decobug@idahorosesociety.org</b> |
| <b>Treasurer</b> | <b>Darlene Hoffland</b> | <b>375-3623</b><br><b>darlenesbeauty@aol.com</b>       |
| <b>Secretary</b> | <b>Angie Barbosa</b>    | <b>409-9664</b><br><b>angelbarbosa@cableone.net</b>    |
| <b>Editor</b>    | <b>Allen Deitz</b>      | <b>867-3345</b><br><b>allen_deitz@hotmail.com</b>      |
| <b>Rose Show</b> | <b>Anita Gonzales</b>   | <b>884-0890</b><br><b>autumnwindgardens@msn.com</b>    |
| <b>Webmaster</b> | <b>Jean Marion</b>      | <b>887-3459</b><br><b>decobug@idahorosesociety.org</b> |